

Cones: Closed multiple obstacles

(Elements must be separated 20 cm - 40 cm)

1. Single "L"

Construction:

Supports – 40cm to 60cm from ground to top of rail

Elements – must be free standing; parallel or perpendicular single or sectioned rails; separated by 20cm - 40cm spacing

Markers – a pair of red and white markers, set within 15cm

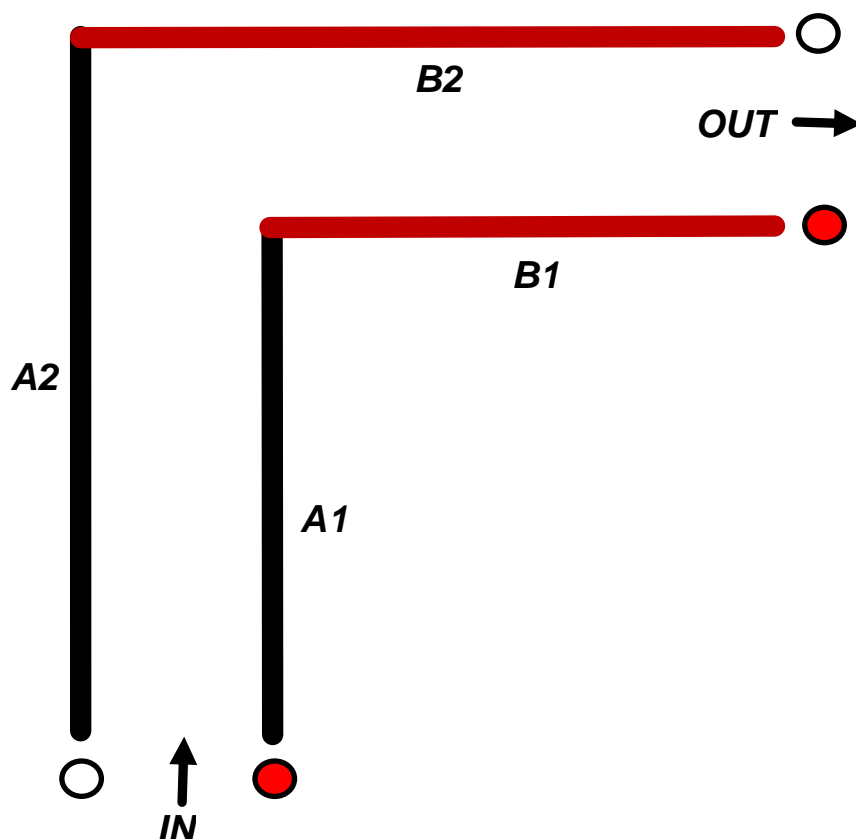
Element.< A> at the IN gate and <> at the OUT gate.

Horse: (minimum measurements)

	IN	A1	A2	B1	B2	OUT
Single	3	8	11	8	11	3
Pair	3	8	11	8	11	3
Four in Hand or Tandem	4	8	12	8	12	4

Pony: (minimum measurements)

	IN	A1	A2	B1	B2	OUT
Single	3	8	11	8	11	3
Pair	3	8	11	8	11	3
Four in Hand or Tandem	3	8	11	8	11	3



2. Double “L”

Construction:

Supports – 40 cm to 60 cm from ground to top of rail

Elements – must be free standing; parallel or perpendicular single or sectioned rails; separated by 20 cm-40 cm spacing.

Markers – indicating each section as follows:

A - within 15 cm of IN.

B - coloured or wrapped rails or markers on the ground.

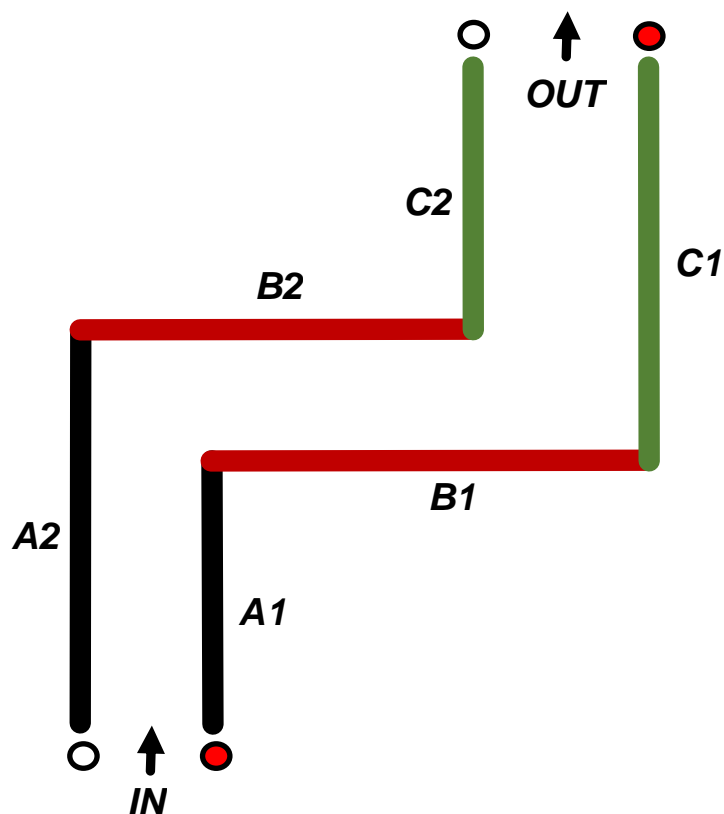
C - within 15 cm of OUT.

Horse: (minimum measurements)

	IN	A1	A2	B	B1	B2	C	C1	C2	OUT
Single	3	5	9	4	10	9	4	9	5	4
Pair	3	5	9	4	10	9	4	9	5	4
Four in Hand or Tandem	4	5	10	5	10	9	5	10	5	5

Pony: (minimum measurements)

	IN	A1	A2	B	B1	B2	C	C1	C2	OUT
Single	3	5	9	4	9	9	4	9	5	4
Pair	3	5	9	4	9	9	4	9	5	4
Four in Hand or Tandem	3	5	9	4	9	9	4	9	5	4



3. Single “U”

Construction:

Supports – 40 cm to 60 cm from ground to top of rail

Elements – must be free standing; parallel or perpendicular single or sectioned rails; separated by 20 cm-40 cm spacing

Markers – indicating each section as follows:

A - within 15 cm of IN.

B – coloured or wrapped rails or markers on the ground.

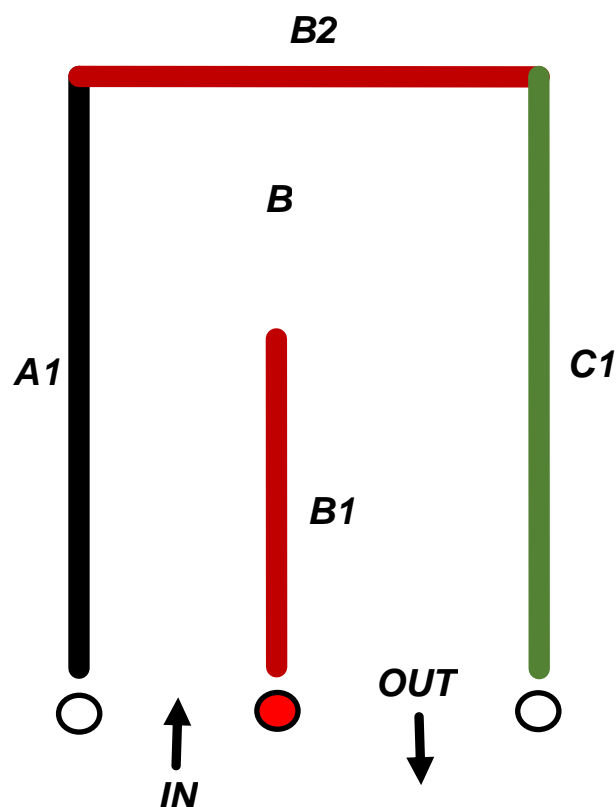
C – outside but within 15 cm of C.

Horse: (minimum measurements)

	IN	A1	B	B1	B2	C1	OUT
Single	3	9	4	5	7	9	4
Pair	3	9	4	5	7	9	4
Four in Hand or Tandem	4	9	5	5	9	10	5

Pony: (minimum measurements)

	IN	A1	B	B1	B2	C1	OUT
Single	2	8	3	5	5	8	3
Pair	3	9	4	5	7	9	4
Four in Hand or Tandem	3	9	4	5	7	9	4



4. Double “U”

Construction:

Supports – 40 cm to 60 cm from ground to top of rail

Elements – must be free standing; parallel or perpendicular single or sectioned rails; separated by 20 cm-40 cm spacing

Markers – indicating each section as follows:

A- within 15 cm of IN.

B, C – coloured or wrapped rails or markers on the ground.

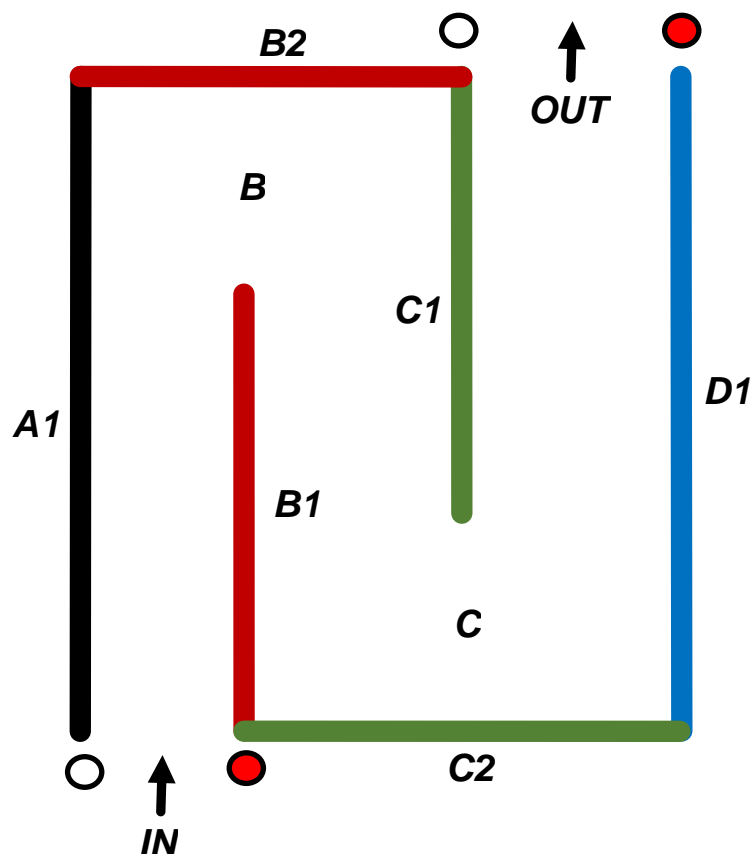
D – within 15 cm of OUT.

Horse: (minimum measurements)

	IN	A1	B	B1	B2	C	C1	C2	D1	OUT
Single	3	12	4	8	7	4	8	8	12	4
Pair	3	12	4	8	7	4	8	8	12	4
Four in Hand or Tandem	4	13	5	8	9	5	8	10	13	5

Pony: (minimum measurements)

	IN	A1	B	B1	B2	C	C1	C2	D1	OUT
Single	2	9	3	6	5	3	6	6	9	3
Pair	3	12	4	8	7	4	8	8	12	4
Four in Hand or Tandem	3	12	4	8	7	4	8	8	12	4



5. Box

Construction:

Supports – 40 cm to 60 cm from ground to top of rail

Elements – must be free standing; parallel or perpendicular single or sectioned rails; separated by 20 cm - 40 cm spacing

Markers – indicating each section as follows:

A- within 15 cm of IN.

B – coloured or wrapped rails or markers on the ground.

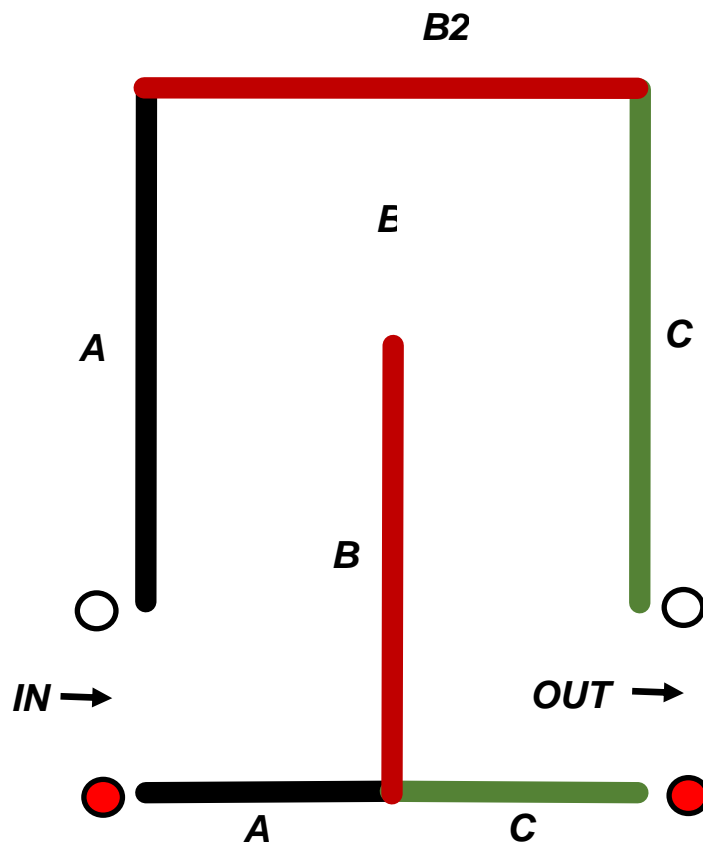
C – outside but within 15 cm of C.

Horse: (minimum measurements)

	IN	A1	A2	B	B1	B2	C1	C2	OUT
Single	3	4	8	4	7	8	4	7	4
Pair	3	4	8	4	7	8	4	7	4
Four-in-Hand or Tandem	4	5	9	5	8	10	5	8	5

Pony: (minimum measurements)

	IN	A1	A2	B	B1	B2	C1	C2	OUT
Single	2	3	7	3	6	6	3	6	3
Pair	3	4	8	4	7	8	4	7	4
Four-in-Hand or Tandem	3	4	8	4	7	8	4	7	4



6. Double Box

Construction:

Supports – 40 cm to 60 cm from ground to top of rail

Elements – must be free standing; parallel or perpendicular single or sectioned rails; separated by 20 cm-40 cm spacing

Markers – indicating each section as follows:

A- within 15 cm of IN.

B, C – coloured or wrapped rails or markers on the ground.

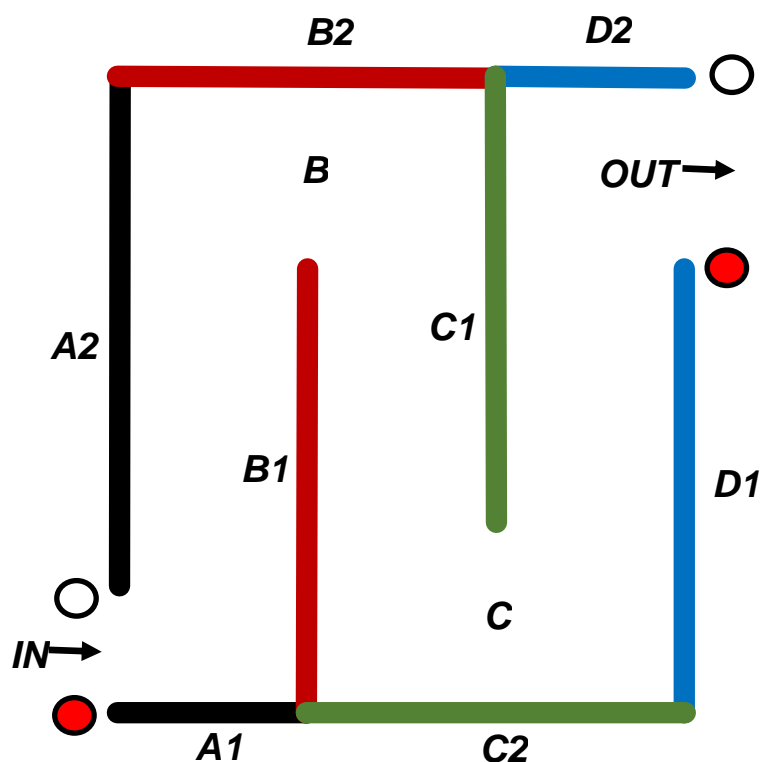
D – within 15 cm of OUT.

Horse: (minimum measurements)

	IN	A1	A2	B	B1	B2	C	C1	C2	D1	D2	OUT
Singles	3	4	8	4	7	8	4	7	8	7	4	4
Pairs	3	4	8	4	7	8	4	7	8	7	4	4
Tandems	4	5	9	5	8	10	5	8	10	8	5	5
Fours	4	5	9	5	8	10	5	8	10	8	5	5

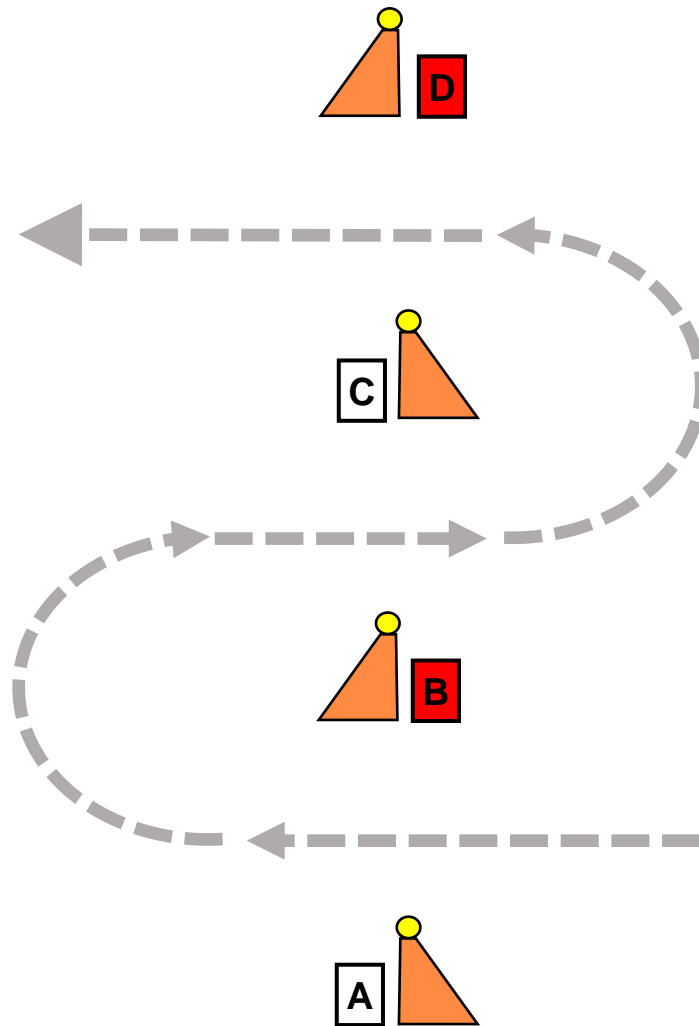
Pony: (minimum measurements)

	IN	A1	A2	B	B1	B2	C	C1	C2	D1	D2	OUT
Singles	2	3	8	3	7	6	3	7	6	7	3	3
Pairs	3	4	8	4	7	8	4	7	8	7	4	4
Tandems	3	4	8	4	7	8	4	7	8	7	4	4
Fours	3	4	8	4	7	8	4	7	8	7	4	4



Cones: Open Multiple Obstacles

1. SERPENTINE

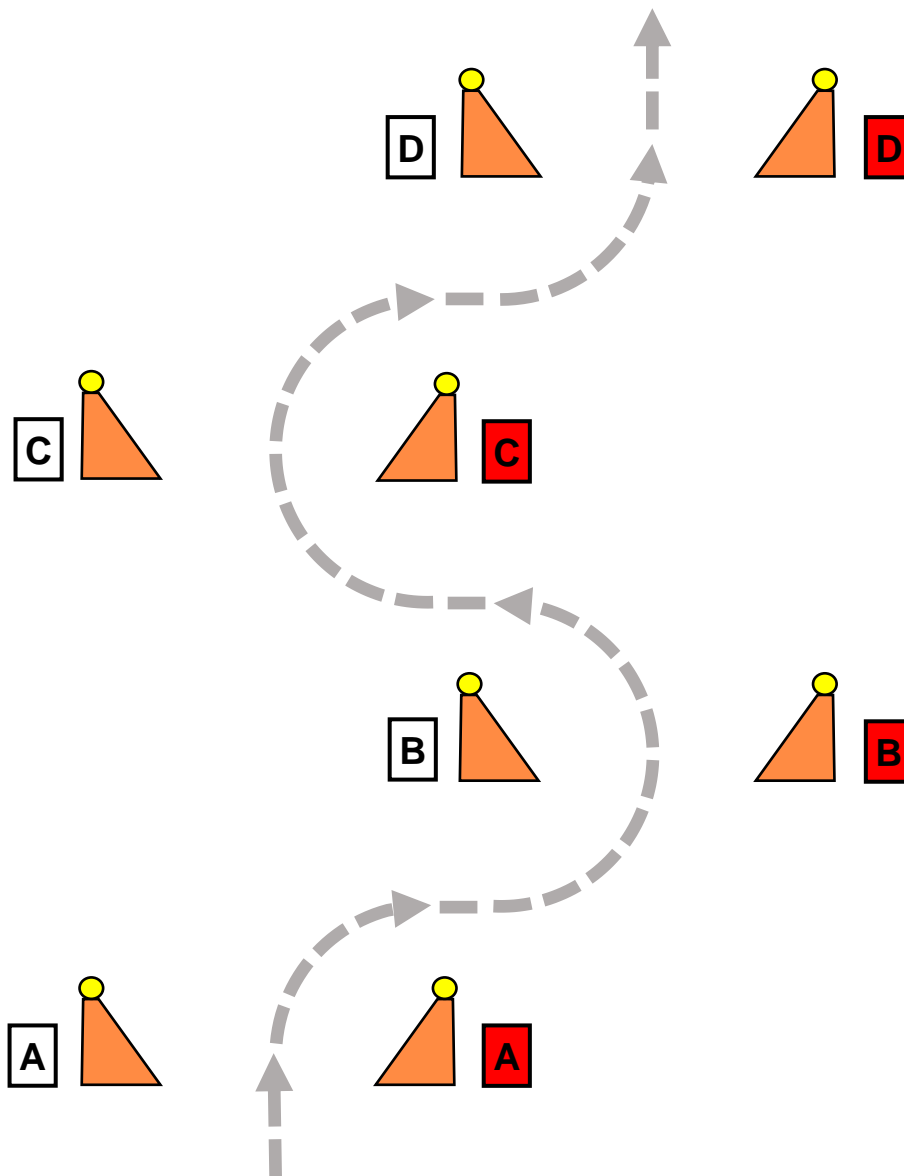


Distance between pairs of cones, centre to centre

	Horses	Ponies
Four-in-Hand	12m	10m
Tandem	12m	10m
Pair	8m	8m
Single	8m	8m

Cones to be set in a straight line with marker on opposite sides.

2. ZIG-ZAG:



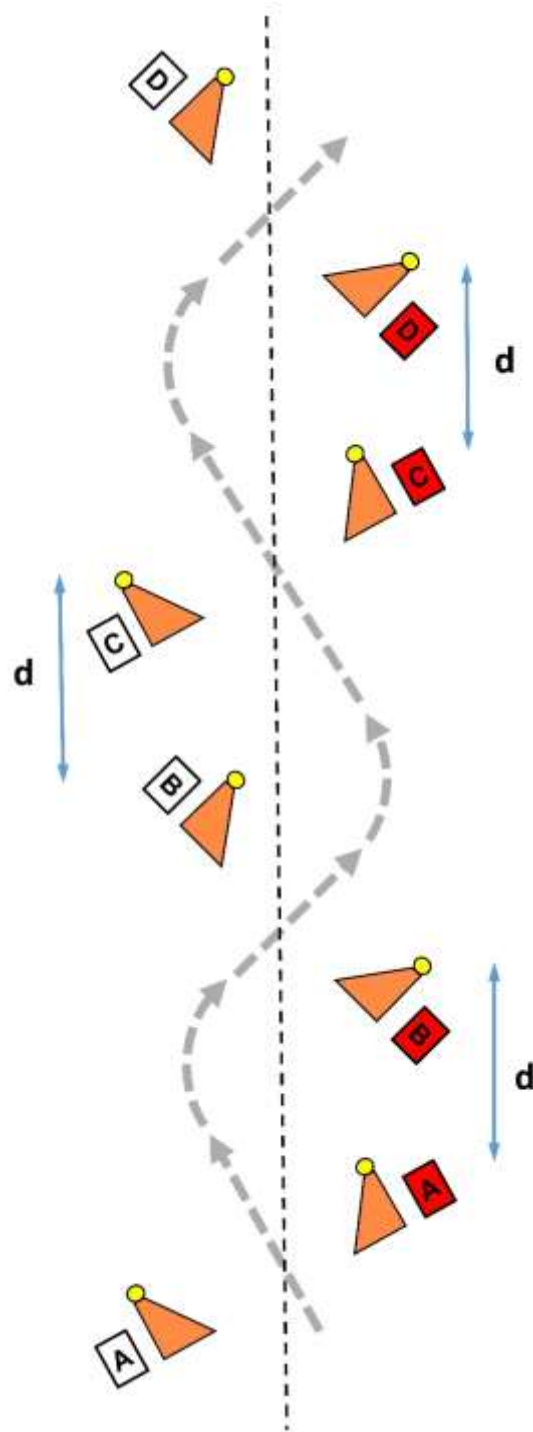
Distance between pairs of cones, centre to centre

	Horses	Ponies
Four-in-Hand	11m - 13m	9m - 11m
Tandem	11m - 13m	9m - 11m
Pair	10m - 12m	9m - 11m
Single	10m - 12m	9m - 11m

Centre line cones to be set in a straight line, either in front, at the middle or at the rear of the cone (as shown above) with markers placed within 15 cm.

The centre line cone shall not be adjusted, the outside cone shall be set to the required track width.

3. THE WAVE:

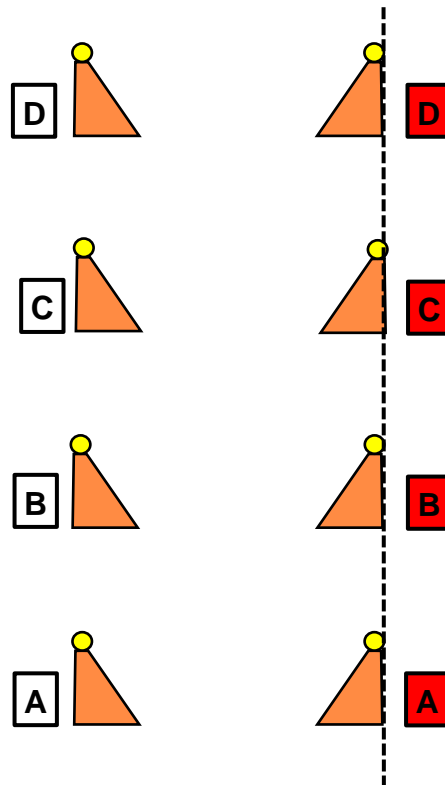


Angle of pair of cones to the middle wave line - approximately 45 degrees.

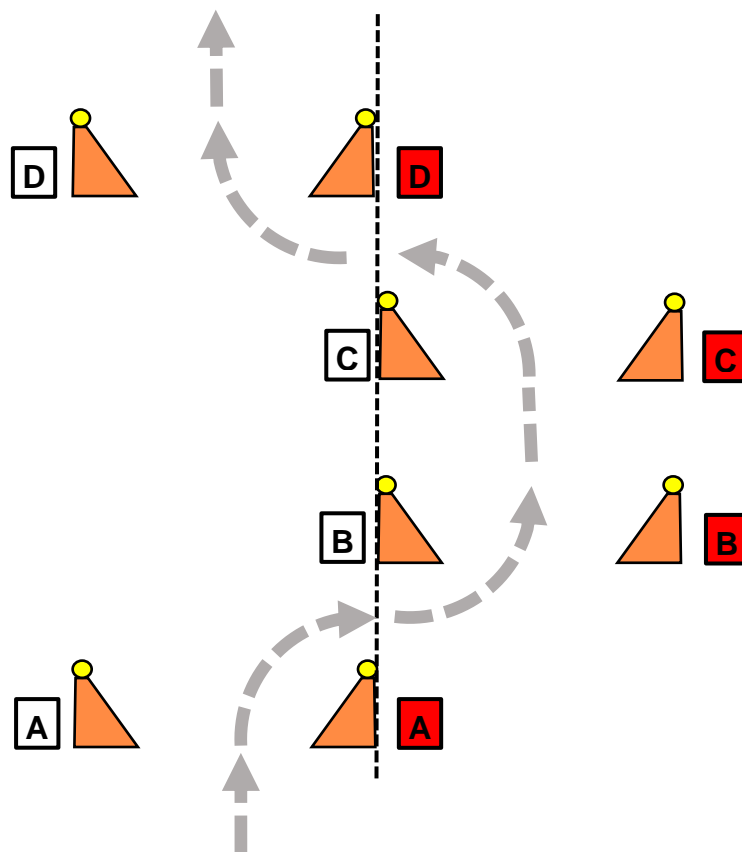
d = distance between nearest pair of cones - centre to centre

	Horses	Ponies
Four-In-Hand	10-12m	10-12m
Tandems	10-12m	10-12m
Pairs	8-10m	8-10m
Singles	8-10m	8-10m

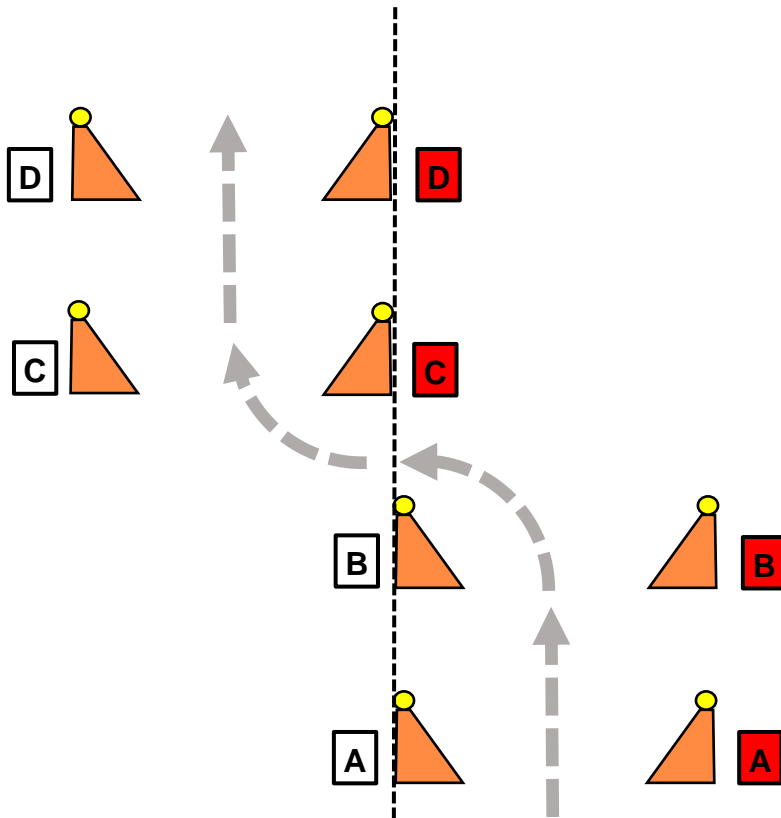
4. Alternative to ZIG-ZAG



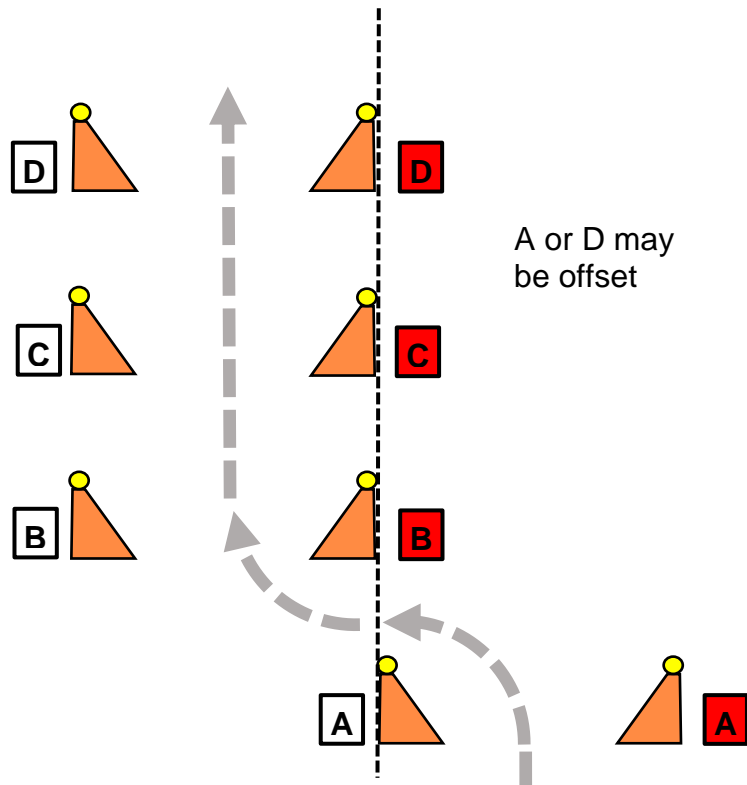
5. Alternative to ZIG-ZAG



6. Alternative to ZIG-ZAG

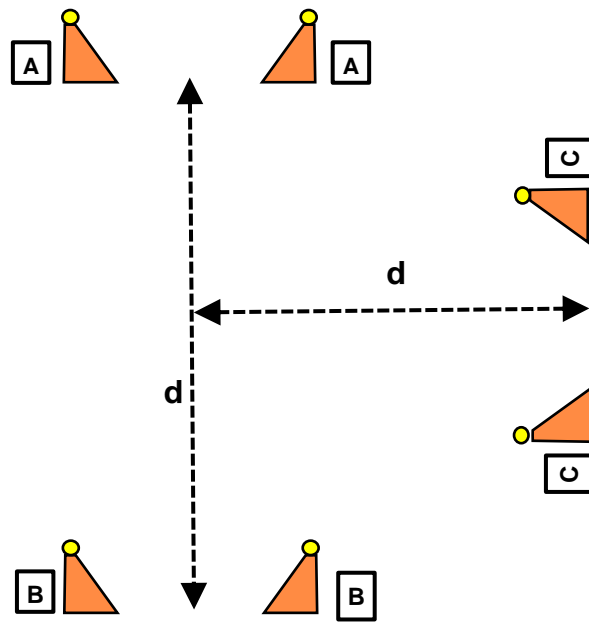


7. Alternative to ZIG-ZAG



8. Alternative to ZIG-ZAG

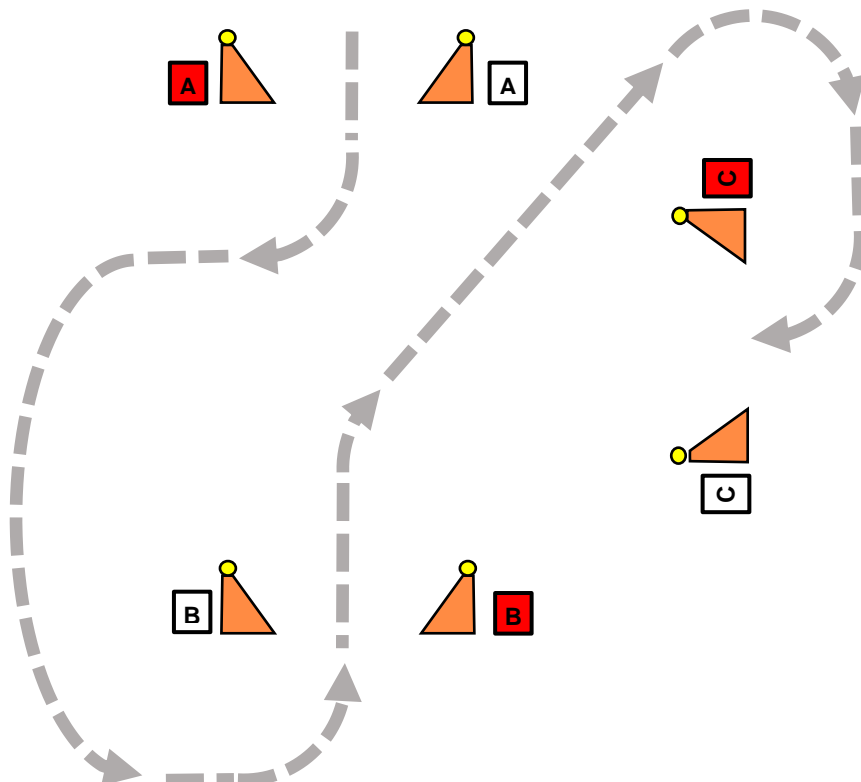
The Triangle



Distance between cones (d)

Four-in-hand	10-12m
Tandem	10-12m
Pair	8-10m
Single	8-10m

Example flagging

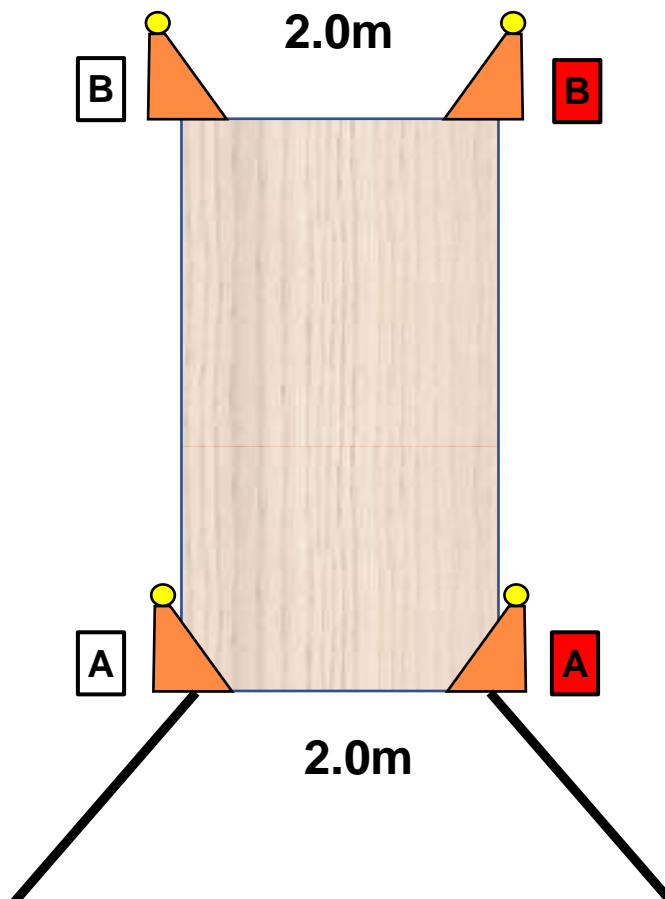


ANNEX 6 Cones: The Bridge

Dimensions:

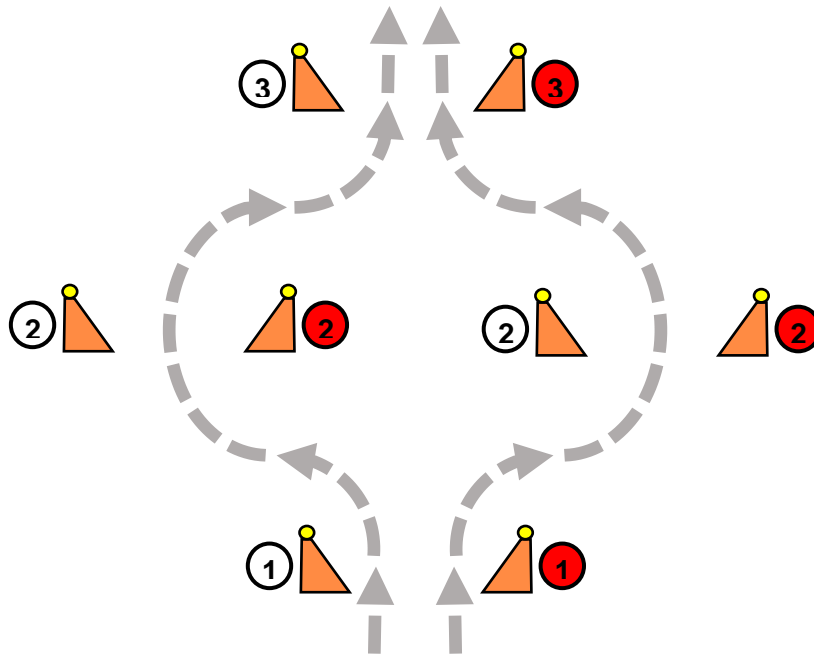
10m x 3m; maximum 20 cm high with fan shaped wings

Cones required at both ends adjacent to bridge, with red and white letters A at entrance and letters B at exit, set at a constant clearance of 2.0 metres for all classes.

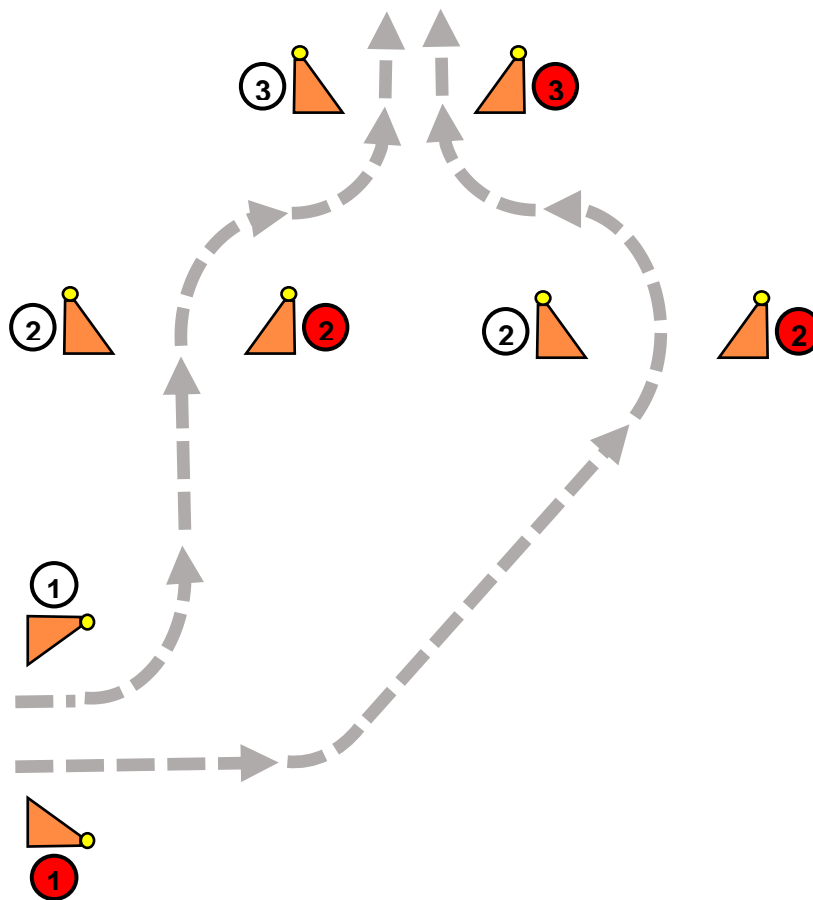


Cones: Alternative Options

Alternative routes



Official distance = the longest route



Cones: Oxe

An oxe will be composed of 2 pairs of cones in a straight line.

The distance between the first set of cones and the second set will be between 1.5 and 3 metres, at the option of the Course Designer.

The oxe counts as a single obstacle and the maximum penalty points for knocking down up to 4 balls is 3 penalty points in total.

The first set of cones will have the number of the obstacle and be marked with red and white flags and the second set of cones will be marked with red and white flags.

This obstacle will be judged as a single obstacle. The oxe may be crossed

A maximum of five oxes are allowed in a Cones course.

Distance between the two pair of cones: minimum 1.5, maximum 3 metres.

The distance between the two pairs of cones has to be measured from the Balls

